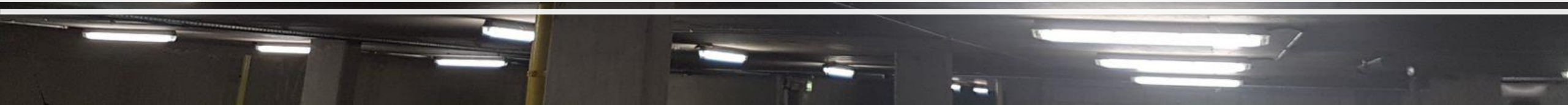




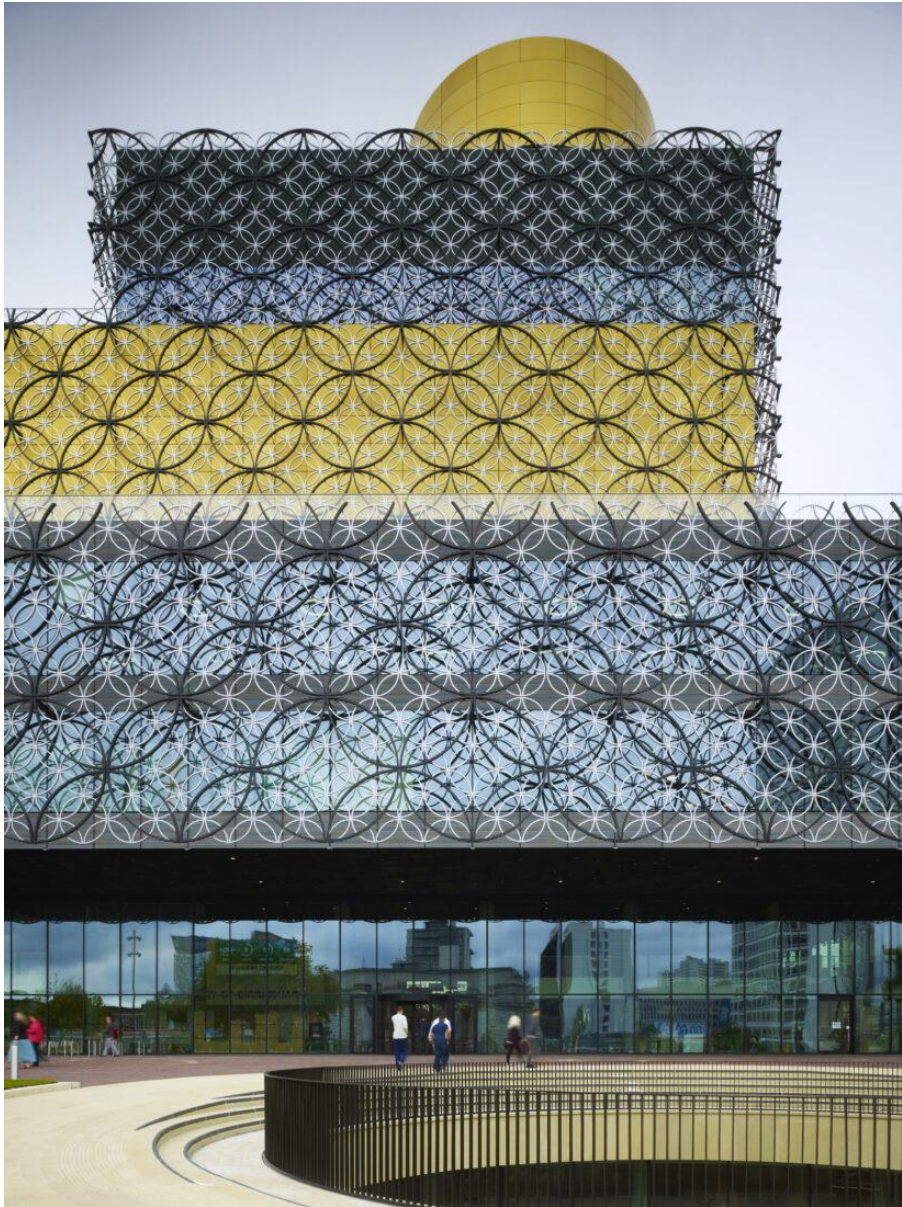
Design Challenges of Podium Decks



Intro

- Ben Hickman MEng PgDip MSt (Cantab) C.Build E CSRT CSSW APAEWE MCIQB MCABE
- Technical Director – CSSW LONDON WATERPROOFING
- www.cssw.london
- 02074584073









HERAS
Manufacturing & Logistics
Tel: 0800 073 9187

FIRE
EXIT





SMITH

HOTEL

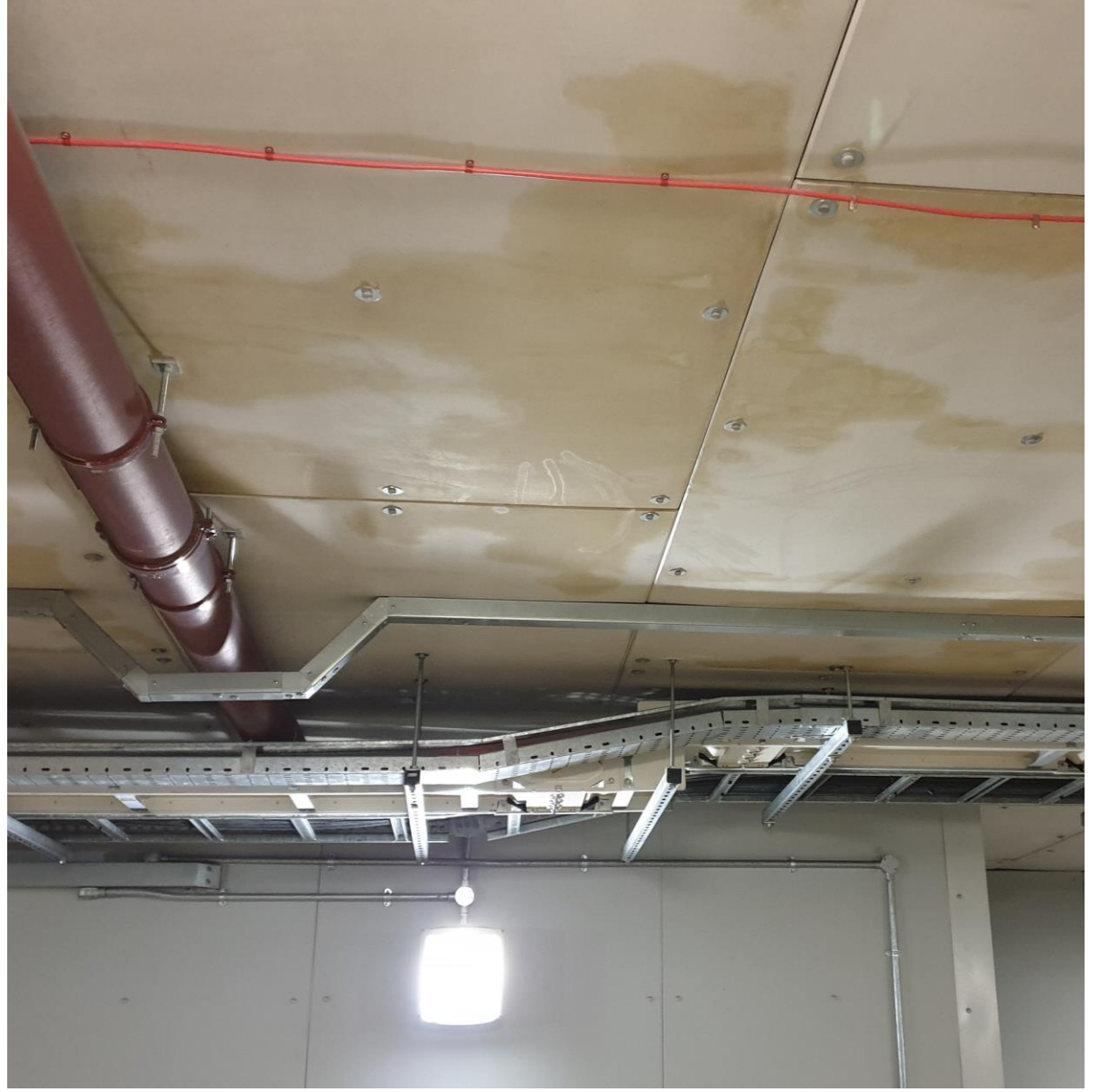
EXIT

EXIT









BS 8102:2022
– clause 6.5 –
Buried Decks

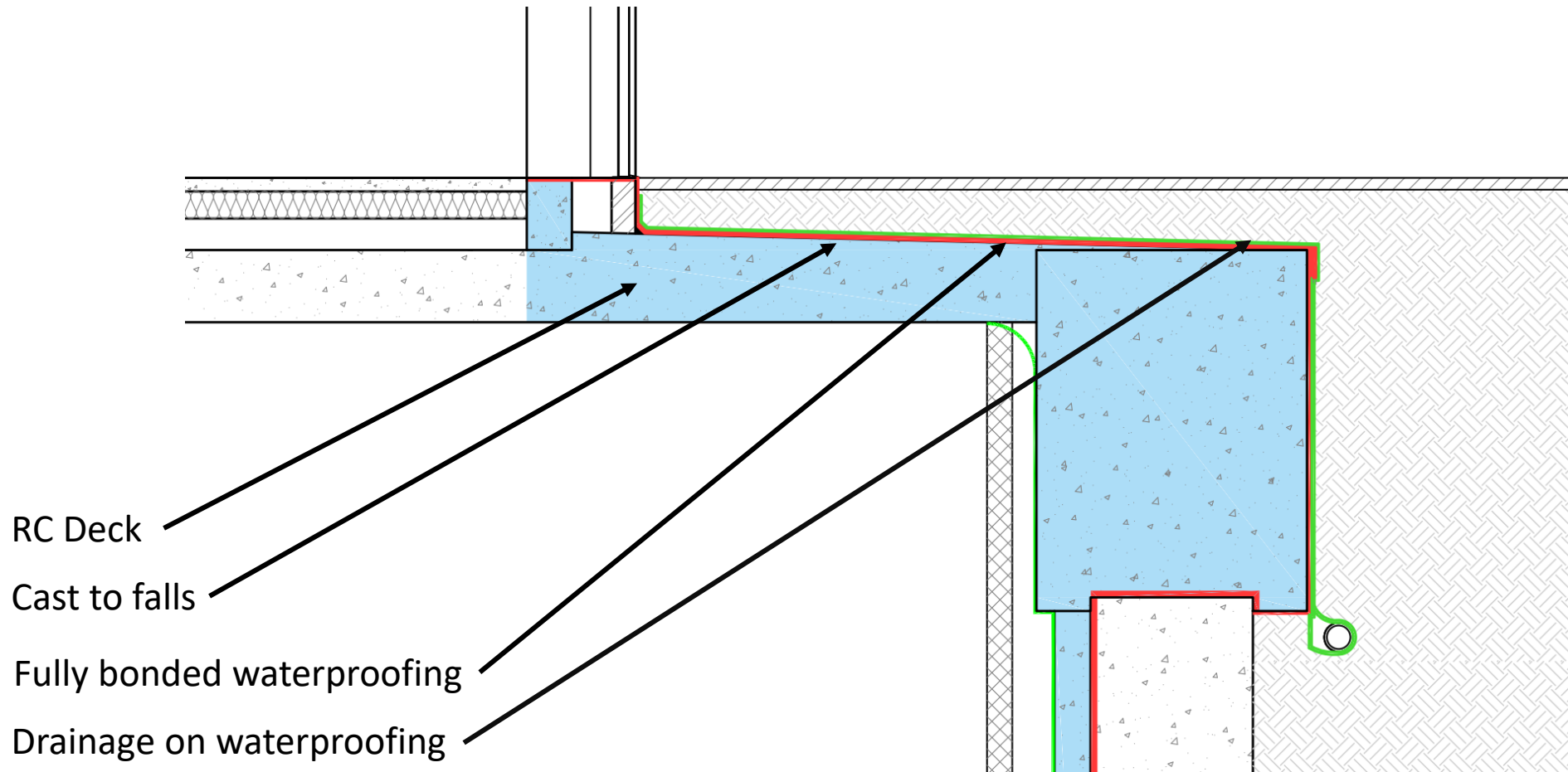
Strong preference for
reinforced concrete substrates

Falls are required

Ideally fully bonded
waterproofing

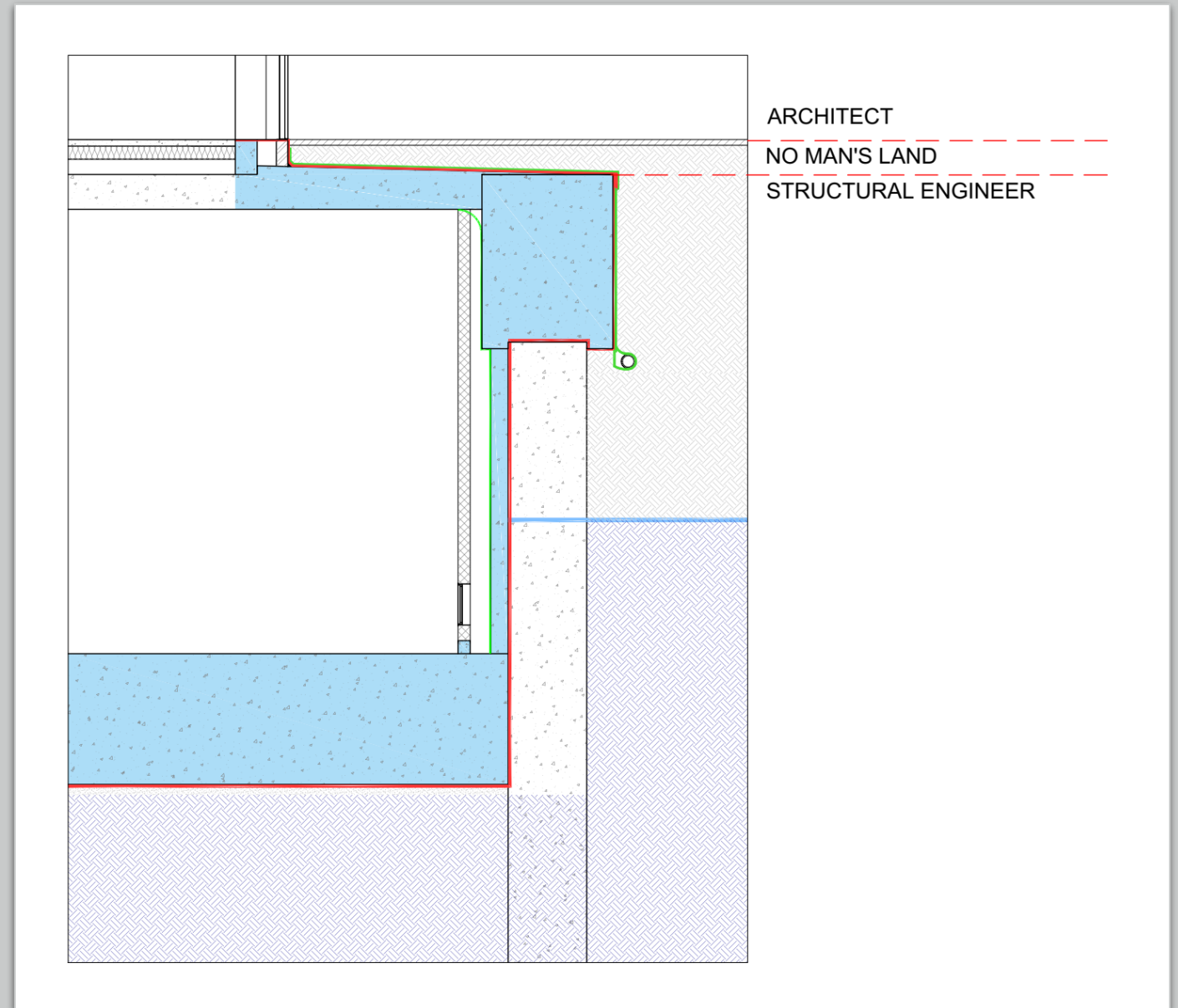
Drainage provided directly
above the waterproofing

What's so hard about that?



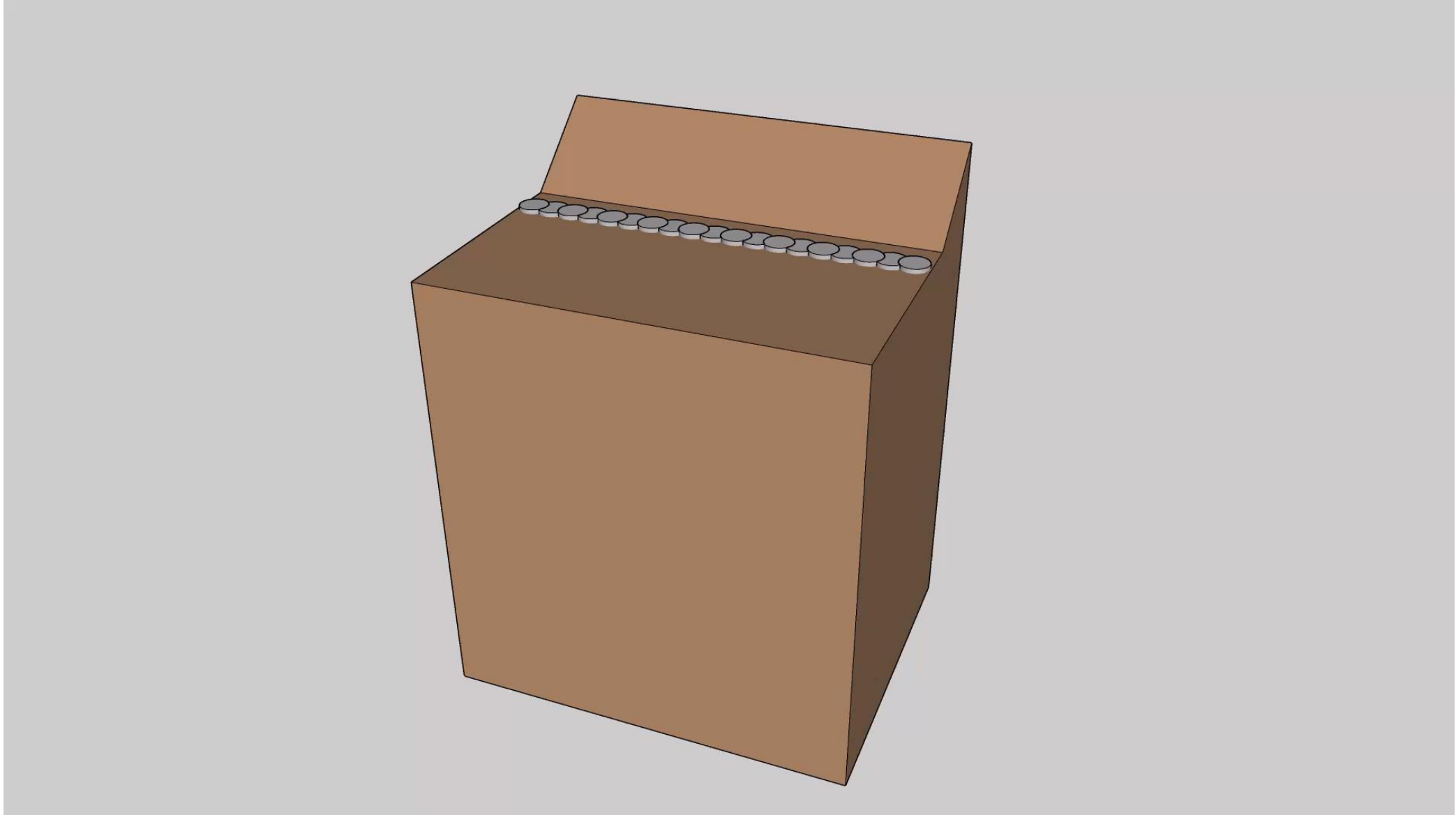
Who's design lead?

- Structural engineer
- Architect
- Landscape architect

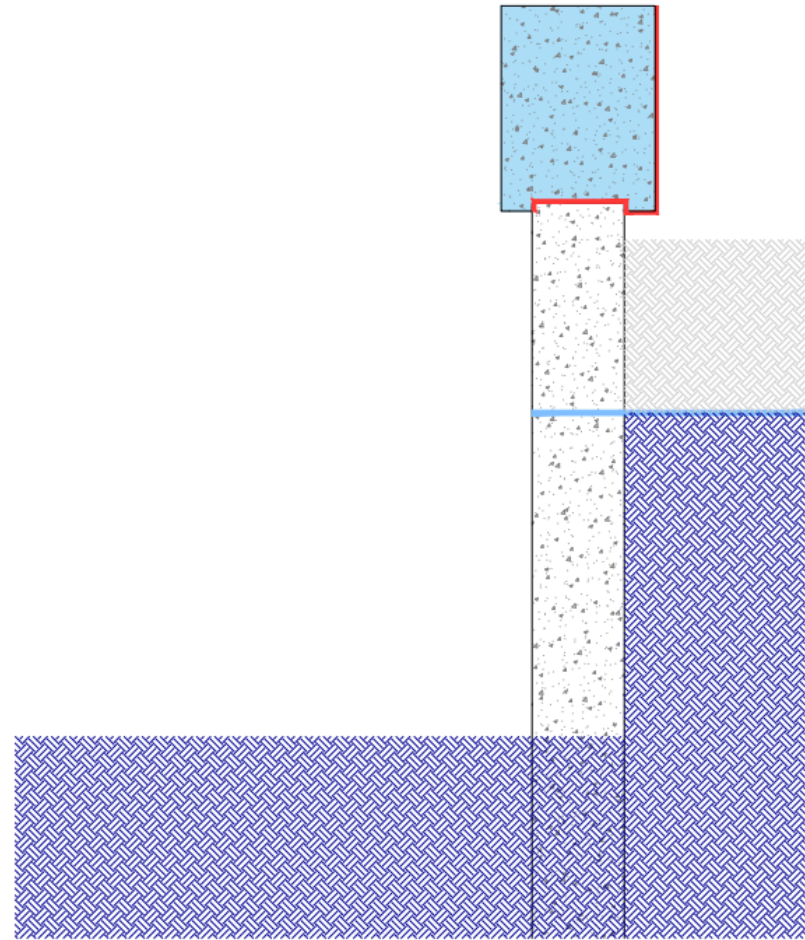




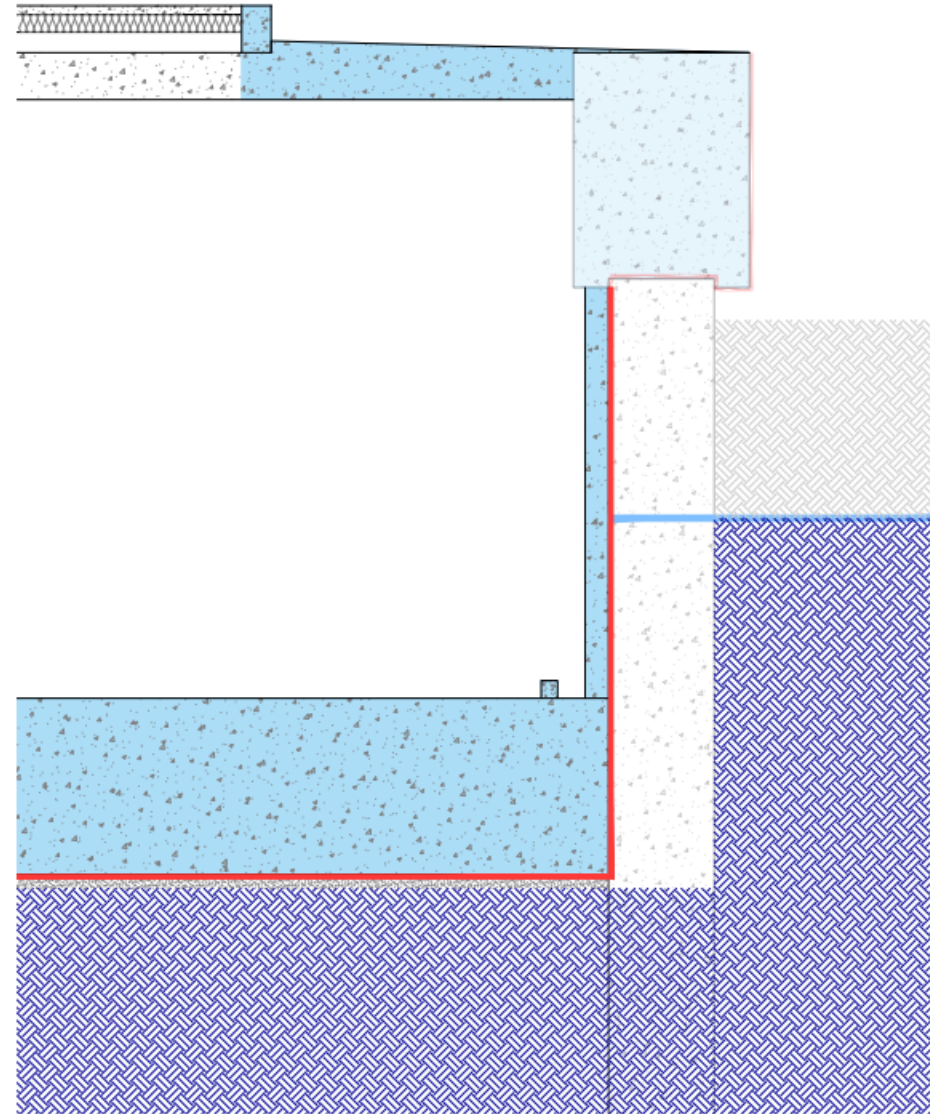
Who's package is it in?



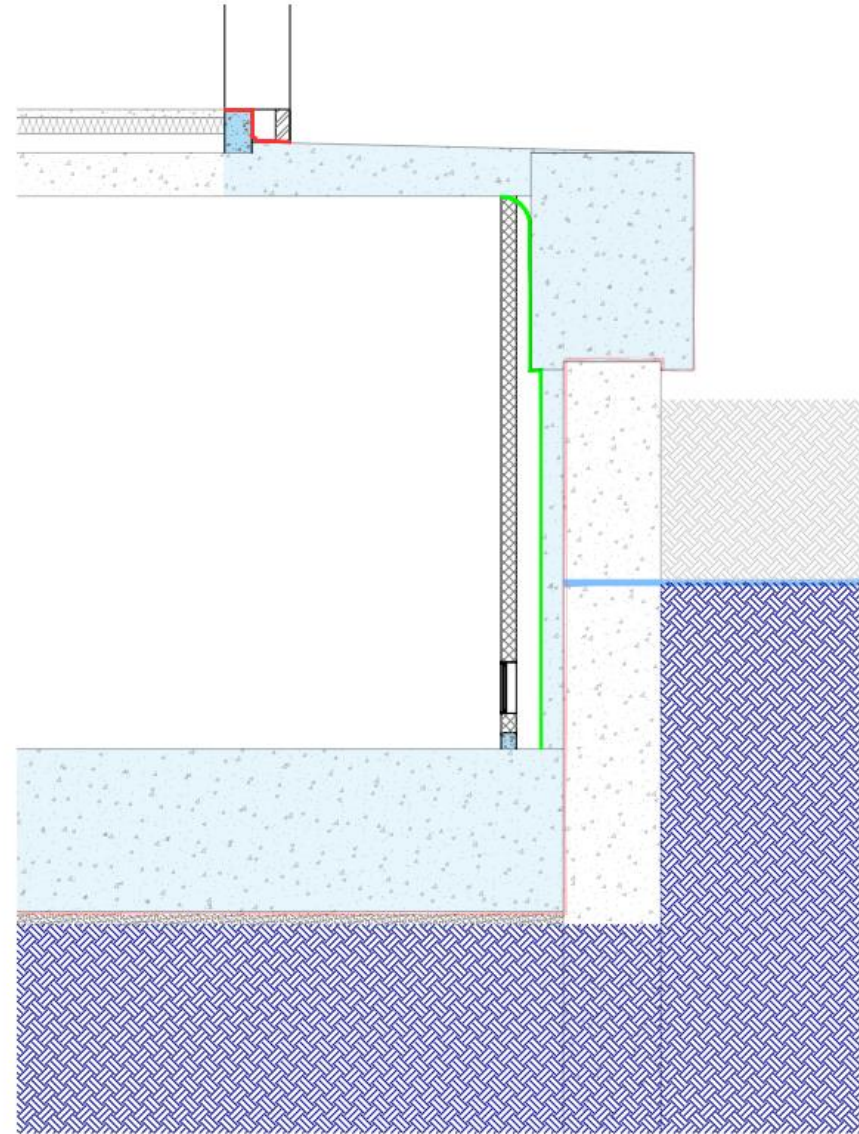
Piling contractor



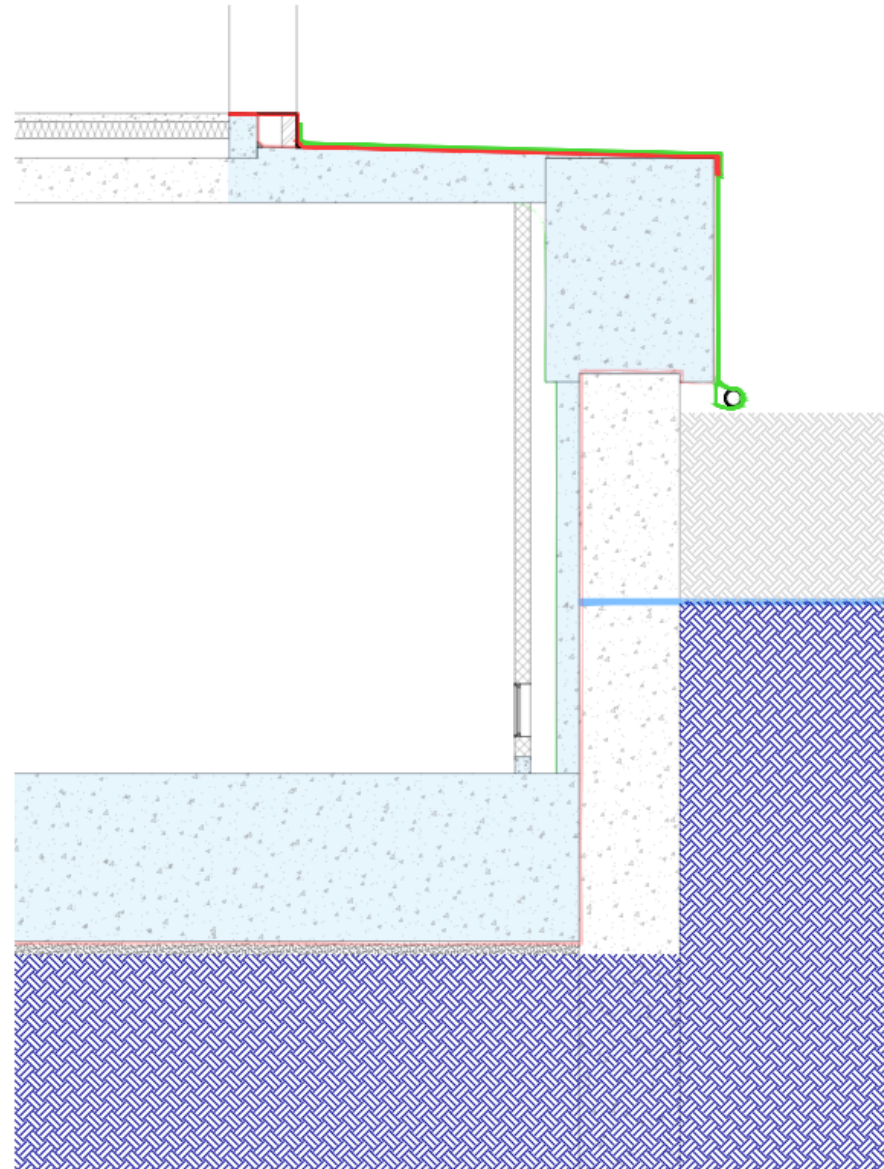
Concrete frame contractor



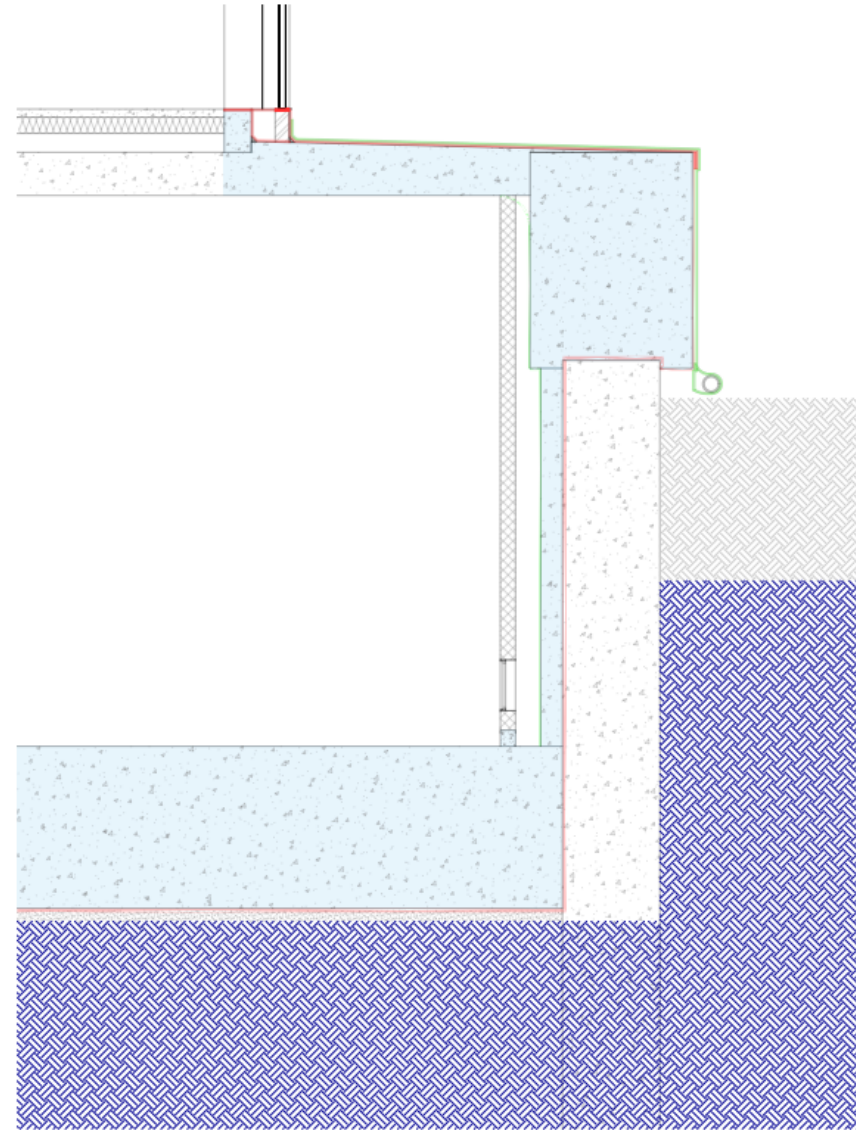
Brickwork
contractor



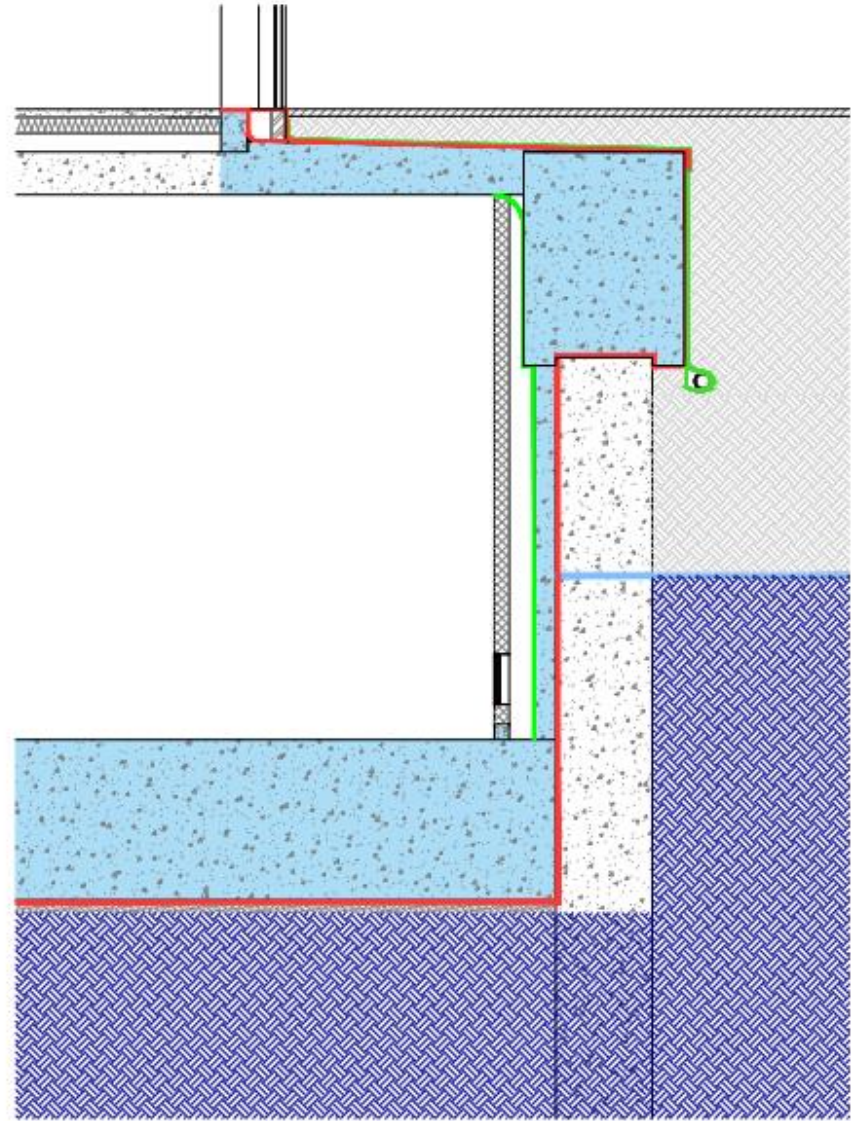
Civils
contractor



Façade contractor



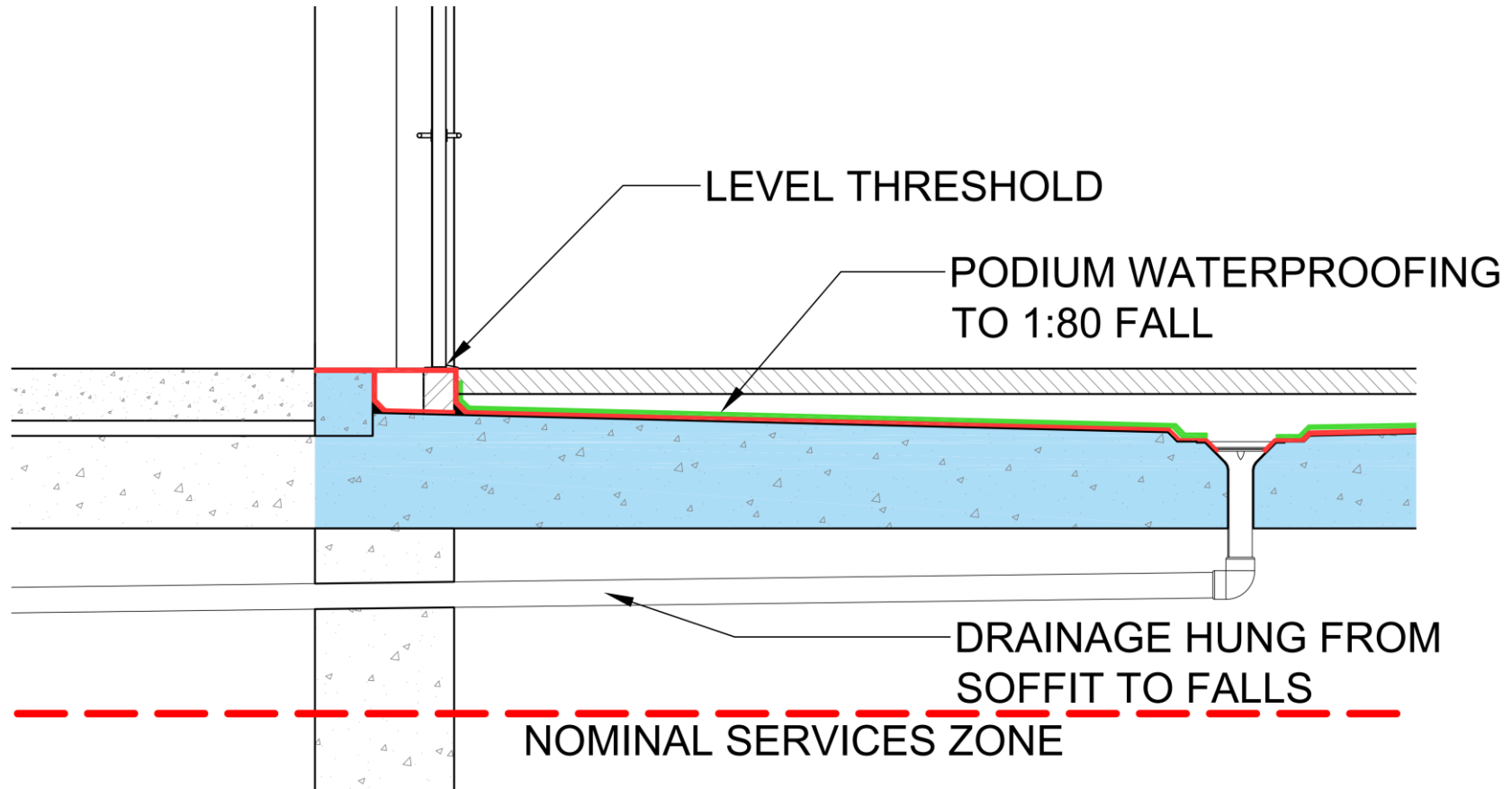
Landscaping
contractor





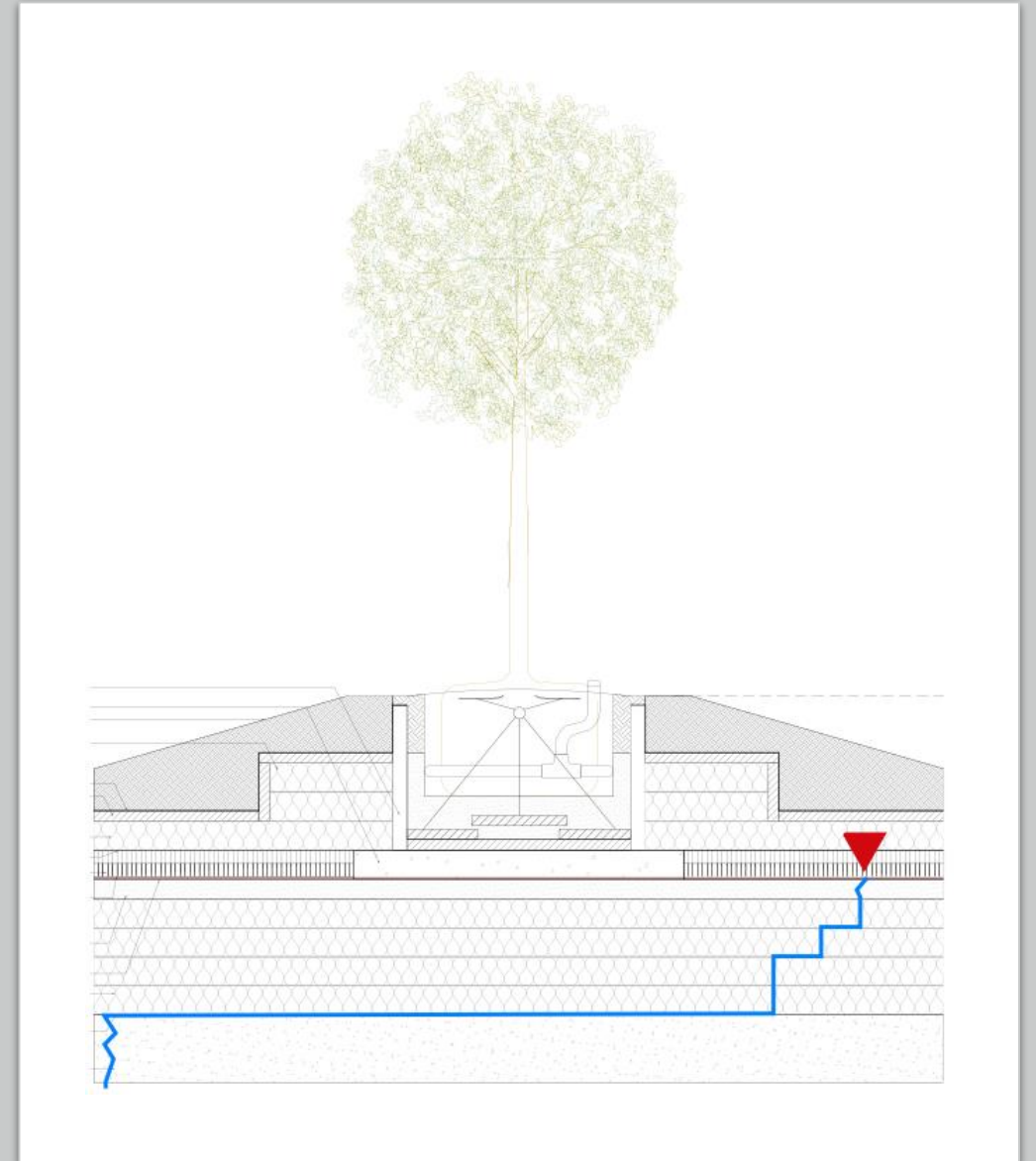
A waterproofing designer should be appointed

Achieving falls



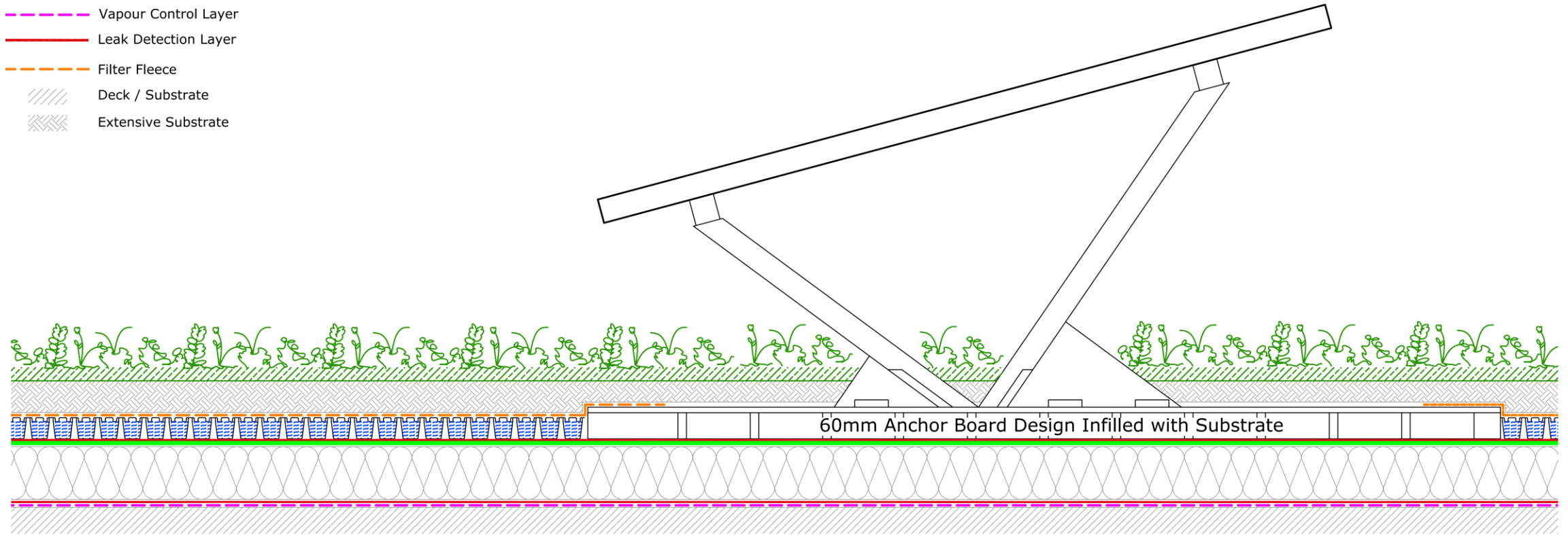


Defect location
≠ ingress
location



Key

- Waterproofing Layer
- Bauder DSE Board
- Insulation
- Vapour Control Layer
- Leak Detection Layer
- Filter Fleece
- Deck / Substrate
- Extensive Substrate



Conclusions

- The waterproofing designer **SHOULD BE APPOINTED** during RIBA Stage 3
- Achieving falls is the challenge
- Site reality & Quality Assurance is critical to success.

Contact us

- www.cssw.london
- info@cssw.london
- 0207 458 4073

CLW

CSSW
LONDON
WATERPROOFING